

## RUISBROEK



### Characteristics of the property

Name	RUISBROEK
Address	Humaniteitslaan 65
Town	1601 Ruisbroek
Year of construction	1996
Year of renovation	2020
Price range	From 341.000 € to 1.850.000 €
Surface area range	From 343 m <sup>2</sup> to 1.862 m <sup>2</sup>
Number of floors	3
Unit(s) type	Offices
Soil certificate	Yes
Asbestos inventory	Received
Elevator	Yes
Heating type	Gas
Air conditioning	Yes
Access control	Yes
Outdoor parking	Yes

16 UNITS IN THIS PROPERTY

For sale

## RUISBROEK - 1.2

1601 Ruisbroek

Price	341.000 €
-------	-----------

Category	Offices
----------	---------

Area surface	343m <sup>2</sup>
--------------	-------------------

Floor	+1
-------	----



## RUISBROEK - 1.4

1601 Ruisbroek

Price	341.000 €
-------	-----------

Category	Offices
----------	---------

Area surface	343m <sup>2</sup>
--------------	-------------------

Floor	+1
-------	----



## RUISBROEK - 2.2

1601 Ruisbroek

Price	345.000 €
-------	-----------

Category	Offices
----------	---------

Area surface	347m <sup>2</sup>
--------------	-------------------

Floor	+2
-------	----



## RUISBROEK - 2.4

1601 Ruisbroek

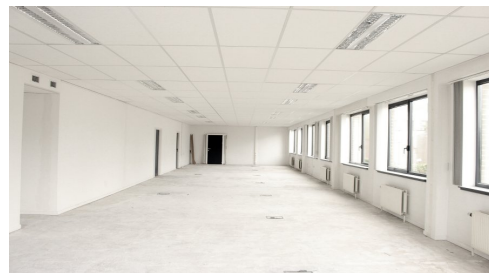
Price	345.000 €
Category	Offices
Area surface	347m <sup>2</sup>
Floor	+2



## RUISBROEK - 0.1

1601 Ruisbroek

Price	410.000 €
Category	Offices
Area surface	412m <sup>2</sup>
Floor	+0



## RUISBROEK - 1.1 + 1.2

1601 Ruisbroek

Price	461.000 €
Category	Offices
Area surface	465m <sup>2</sup>
Floor	+1



## RUISBROEK - 1.3 + 1.4

1601 Ruisbroek

Price	461.000 €
Category	Offices
Area surface	465m <sup>2</sup>
Floor	+1



## RUISBROEK - 2.1 + 2.2

1601 Ruisbroek

Price	463.000 €
Category	Offices
Area surface	466m <sup>2</sup>
Floor	+2



## RUISBROEK - 2.3 + 2.4

1601 Ruisbroek

Price	463.000 €
Category	Offices
Area surface	466m <sup>2</sup>
Floor	+2



## RUISBROEK - 2.1 + 2.2 + 2.3

1601 Ruisbroek

Price	581.000 €
-------	-----------

Category	Offices
----------	---------

Area surface	585m <sup>2</sup>
--------------	-------------------

Floor	+2
-------	----



## RUISBROEK - 2.1 + 2.3 + 2.4

1601 Ruisbroek

Price	581.000 €
-------	-----------

Category	Offices
----------	---------

Area surface	585m <sup>2</sup>
--------------	-------------------

Floor	+2
-------	----



## RUISBROEK - 1.1 + 1.3 + 1.4

1601 Ruisbroek

Price	583.000 €
-------	-----------

Category	Offices
----------	---------

Area surface	587m <sup>2</sup>
--------------	-------------------

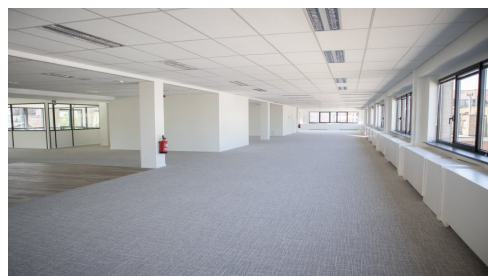
Floor	+1
-------	----



## RUISBROEK - 1.1 + 1.2 + 1.3

1601 Ruisbroek

Price	583.000 €
Category	Offices
Area surface	587m <sup>2</sup>
Floor	+1



## RUISBROEK - 1.1 + 1.2 + 1.3 + 1.4

1601 Ruisbroek

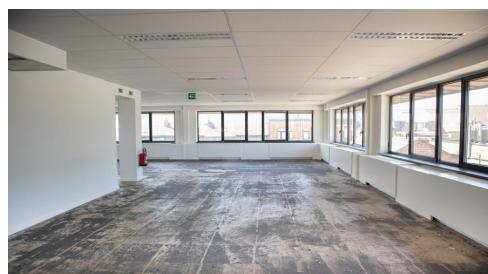
Price	924.000 €
Category	Offices
Area surface	930m <sup>2</sup>
Floor	+1



## RUISBROEK - 2.1 + 2.2 + 2.3 + 2.4

1601 Ruisbroek

Price	926.000 €
Category	Offices
Area surface	932m <sup>2</sup>
Floor	+2



# RUISBROEK - 1 + 2

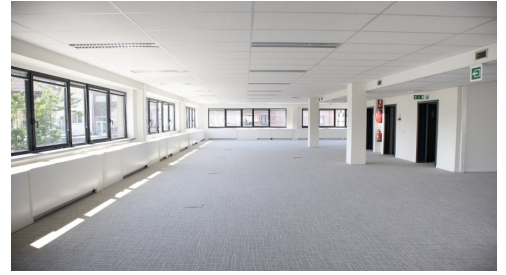
1601 Ruisbroek

Price	1.850.000 €
-------	-------------

Category	Offices
----------	---------

Area surface	1862m <sup>2</sup>
--------------	--------------------

Floor	+1+2
-------	------



## Description

Offices for sale in Ruisbroek, in a building with excellent visibility and accessibility.

3.106 m<sup>2</sup> divided over a ground floor and 3 upper floors. Divisible. Freestanding building equipped with air conditioning, false ceilings, peripheral ducts, carpet and from a garage door.

Common roof terrace (permit issued). EPB (class) : (X) undefined – 340 kWh<sub>prim</sub>/m<sup>2</sup>/year.

External parking's available. 4 common charging stations.

Easily accessible by car (exit 18 the Brussels RO ring road), by train (6 minute walking distance from Ruisbroek station), by bus (De Lijn & Stib bus stops) and by bicycle (F20 bicycle highway Halle-Brussels).

## Contact



**Steven Sagman**

CCO

[ss@growners.be](mailto:ss@growners.be)

+32 470 10 48 41

Non contractual document

**GROWNERS S.A.**

Ch. de Louvain 431F

B-1380 Lasne

+32 2 357 33 10

[info@growners.be](mailto:info@growners.be)

BE0860.002.790

