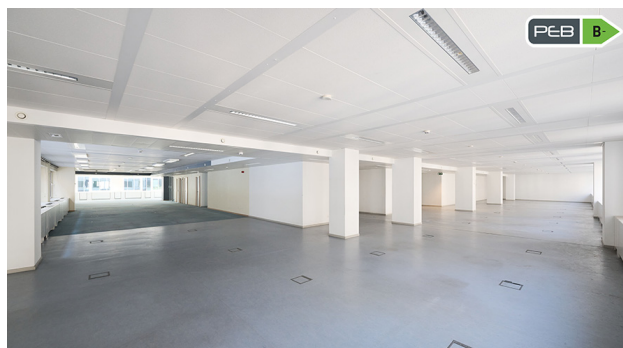


## ROYALE 180 - B2.03



### Characteristics of the property

Name	ROYALE 180
Address	rue Royale 180
Town	1000 Bruxelles
Flood zone	not located in a flood zone
Year of construction	1995
Price range	From 1.500.000 € to 28.650.000 €
Surface area range	From 127 m <sup>2</sup> to 12.148 m <sup>2</sup>
Number of floors	9
Unit(s) type	Offices, Retail
Soil certificate	Yes
Elevator	Yes
Heating type	Gas
Air conditioning	Yes
Indoor parking	Yes

## Property features

Reference ROYALE 180 - B2.03

Address rue Royale 180  
1000, Bruxelles

Sales price 1.500.000 €

Price/m<sup>2</sup> 2.579 €

Type of units Offices

Total surface area (m<sup>2</sup>) 582 m<sup>2</sup>

Disabled access Yes

Floor 2

Available at the contract

Indoor parking 35.000 €

EPB (kWh/m<sup>2</sup>/year) 140

EPB (class) B-

Elevator Yes

Toilets private

## Description

**\*\*DIRECT FROM THE OWNER\*\*** - 582 m<sup>2</sup> of well-equipped offices (air conditioning, raised floor, suspended ceiling...), located in a mixed-use building on the Rue Royale, one of the most prestigious locations in the heart of Brussels.

These light-filled offices are located on the second floor, far right, and have private sanitary facilities and an elevator.

Other surfaces also available ranging from 580 m<sup>2</sup> to 15,000 m<sup>2</sup>. Possibility of underground parking spaces.

For more information, please contact Steven Sagman on 0470/10.48.41 or by email ([ss@growners.be](mailto:ss@growners.be)).

(Ref : ROYALE 180 - B2.03)

## Contact



**Steven Sagman**

CCO

[ss@growners.be](mailto:ss@growners.be)

+32 470 10 48 41

Non contractual document

**GROWNERS S.A.**

Ch. de Louvain 431F

B-1380 Lasne

+32 2 357 33 10

[info@growners.be](mailto:info@growners.be)

BE0860.002.790

