

## RIVERSIDE - H



### Characteristics of the property

Name	RIVERSIDE - H
Address	Boulevard International 55 / H
Town	1070 Anderlecht
Flood zone	not located in a flood zone
Year of construction	1990
Price range	From 620.000 € to 2.800.000 €
Surface area range	From 564 m <sup>2</sup> to 2.542 m <sup>2</sup>
Number of floors	2
Unit(s) type	Offices, Mixed spaces
Soil certificate	Yes
Elevator	Yes
Heating type	Gas
Air conditioning	Yes
Access control	Yes
Outdoor parking	Yes

For sale

## RIVERSIDE - H \ L2.1 + R2.1

1070 Anderlecht

Price	620.000 €
Category	Offices
Area surface	564m <sup>2</sup>
Floor	2



## RIVERSIDE - H \ L0.1 + R0.1

1070 Anderlecht

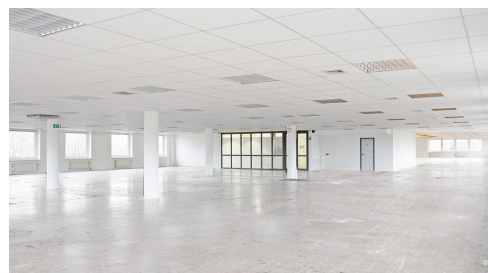
Price	1.020.000 €
Categories	Offices - Mixed spaces
Area surface	927m <sup>2</sup>
Floor	+0



## RIVERSIDE - H \ L1.1 + R1.1

1070 Anderlecht

Price	1.156.000 €
Category	Offices
Area surface	1051m <sup>2</sup>
Floor	1



## RIVERSIDE - H \ Building

1070 Anderlecht

Price	2.800.000 €
Categories	Offices - Mixed spaces
Area surface	2542m <sup>2</sup>
Floor	+0+1+2

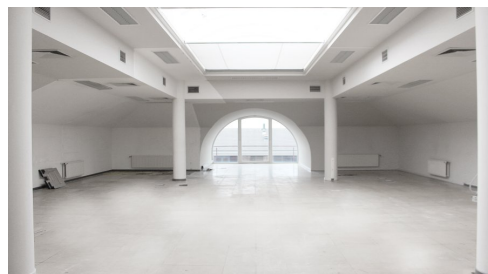


### For rent

## RIVERSIDE - H \ L2.1 + R2.1 RENT

1070 Anderlecht

Monthly rent	5.875 €
Category	Offices
Area surface	564m <sup>2</sup>
Floor	2



## RIVERSIDE - H \ L0.1 + R0.1 RENT

1070 Anderlecht

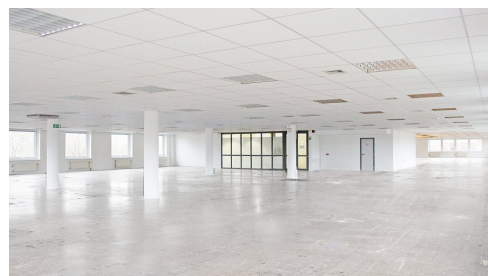
Monthly rent	9.667 €
Categories	Offices - Mixed spaces
Area surface	927m <sup>2</sup>
Floor	+0



## RIVERSIDE - H \ L1.1 + R1.1 RENT

1070 Anderlecht

Monthly rent	10.948 €
Category	Offices
Area surface	1051m <sup>2</sup>
Floor	1



## RIVERSIDE - H \ Building RENT

1070 Anderlecht

Monthly rent	26.479 €
Categories	Offices - Mixed spaces
Area surface	2542m <sup>2</sup>
Floor	+0+1+2



## Description

Offices and multi-purpose areas in the Riverside Business Park located near exit 17 on the West Ring of Brussels. Its exceptional location and numerous parkings make it an ideal location for setting up offices. Several well-known international brands have their headquarters here.

This business park is very spacious, surrounded by greenery and consists of 12 buildings, 9 of which are office buildings and 3 semi-industrial units. It's located in one of the 19 Brussels municipalities and therefore benefits from bilingual status.

Easily accessible by car (350 meters from exit 17 of the Brussels RO ring road), by train (free morning and evening shuttles to/from Brussels-Midi station), by bus (several De Lijn and Stib stops), by metro (metro stop La Roue) and by bicycle (F50 bicycle highway Halle-Brussels). Electrical charging stations.

## Contact



**Steven Sagman**

CCO

[ss@growners.be](mailto:ss@growners.be)

+32 470 10 48 41

Non contractual document

**GROWNERS S.A.**

Ch. de Louvain 431F

B-1380 Lasne

+32 2 357 33 10

info@growners.be

BE0860.002.790

