

RIVERSIDE - E



Characteristics of the property

| | |
|----------------------|---|
| Name | RIVERSIDE - E |
| Address | Boulevard International 55 / E |
| Town | 1070 Anderlecht |
| Flood zone | not located in a flood zone |
| Year of construction | 1990 |
| Price range | From 228.000 € to 850.000 € |
| Surface area range | From 240 m ² to 765 m ² |
| Number of floors | 2 |
| Unit(s) type | Mixed spaces, Offices |
| Soil certificate | Yes |
| Elevator | Yes |
| Heating type | Gas |
| Air conditioning | Yes |
| Access control | Yes |
| Outdoor parking | Yes |

For sale

RIVERSIDE - E / L0.1

1070 Anderlecht

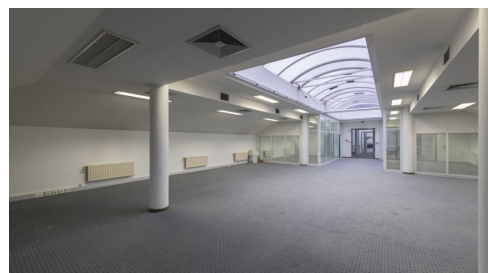
| | |
|--------------|------------------------|
| Price | 500.000 € |
| Categories | Mixed spaces - Offices |
| Area surface | 462m ² |
| Floor | +0 |



RIVERSIDE - E / L2.1

1070 Anderlecht

| | |
|--------------|-------------------|
| Price | 228.000 € |
| Category | Offices |
| Area surface | 240m ² |
| Floor | 2 |



RIVERSIDE - E / R1.1 + R2.1

1070 Anderlecht

| | |
|--------------|-------------------|
| Price | 748.000 € |
| Category | Offices |
| Area surface | 765m ² |
| Floor | 1 + 2 |



For rent

RIVERSIDE - E / L2.1 RENT

1070 Anderlecht

| | |
|--------------|---------|
| Monthly rent | 2.500 € |
|--------------|---------|

| | |
|----------|---------|
| Category | Offices |
|----------|---------|

| | |
|--------------|-------------------|
| Area surface | 240m ² |
|--------------|-------------------|

| | |
|-------|---|
| Floor | 2 |
|-------|---|



RIVERSIDE - E / L0.1 RENT

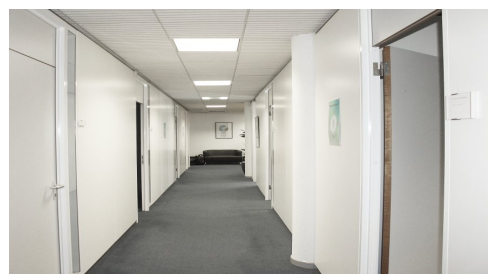
1070 Anderlecht

| | |
|--------------|---------|
| Monthly rent | 4.812 € |
|--------------|---------|

| | |
|------------|------------------------|
| Categories | Offices - Mixed spaces |
|------------|------------------------|

| | |
|--------------|-------------------|
| Area surface | 462m ² |
|--------------|-------------------|

| | |
|-------|----|
| Floor | +0 |
|-------|----|



RIVERSIDE - E / R1.1 + R2.1 RENT

1070 Anderlecht

| | |
|--------------|---------|
| Monthly rent | 7.970 € |
|--------------|---------|

| | |
|----------|---------|
| Category | Offices |
|----------|---------|

| | |
|--------------|-------------------|
| Area surface | 765m ² |
|--------------|-------------------|

| | |
|-------|-------|
| Floor | 1 + 2 |
|-------|-------|



For investment

RIVERSIDE - E / Invest 525 m² - L1.1

1070 Anderlecht

| | | |
|-----------------|-------------------|----------------------|
| Price | 850.000 € | <input type="text"/> |
| Category | Offices | |
| Area surface | 525m ² | |
| Floor | +1 | |
| Gross yield (%) | 9.14% | |

Description

Offices and multi-purpose areas in the Riverside Business Park located near exit 17 on the West Ring of Brussels. Its exceptional location and numerous parkings make it an ideal location for setting up offices. Several well-known international brands have their headquarters here.

This business park is very spacious, surrounded by greenery and consists of 12 buildings, 9 of which are office buildings and 3 semi-industrial units. It's located in one of the 19 Brussels municipalities and therefore benefits from bilingual status.

Easily accessible by car (350 meters from exit 17 of the Brussels RO ring road), by train (free morning and evening shuttles to/from Brussels-Midi station), by bus (several De Lijn and Stib stops), by metro (metro stop La Roue) and by bicycle (F50 bicycle highway Halle-Brussels). Electrical charging stations.

Contact



Steven Sagman

CCO

ss@growners.be

+32 470 10 48 41

Non contractual document

GROWNERS S.A.

Ch. de Louvain 431F

B-1380 Lasne

+32 2 357 33 10

info@growners.be

BE0860.002.790

