

GREENHILL CAMPUS E



Characteristics of the property

Name	GREENHILL CAMPUS E
Address	Interleuvenlaan 15 E
Town	3001 Leuven
Flood zone	not located in a flood zone
Year of construction	1999
Price range	From 269.600 € to 903.000 €
Surface area range	From 337 m ² to 844 m ²
Number of floors	3
Unit(s) type	Offices
Soil certificate	Yes
Asbestos inventory	Received
Elevator	Yes
Air conditioning	Yes
Indoor parking	Yes
Outdoor parking	Yes

6 UNITS IN THIS PROPERTY

For sale

GREENHILL E - 3rd floor

3001 Leuven

Price	269.600 €
-------	-----------

Category	Offices
----------	---------

Area surface	337m ²
--------------	-------------------

Floor	3
-------	---



GREENHILL E - 2nd floor

3001 Leuven

Price	633.750 €
-------	-----------

Category	Offices
----------	---------

Area surface	507m ²
--------------	-------------------

Floor	2
-------	---



GREENHILL E - 2nd & 3rd floors

3001 Leuven

Price	903.000 €
-------	-----------

Category	Offices
----------	---------

Area surface	844m ²
--------------	-------------------

Floor	2+3
-------	-----



For rent

GREENHILL E - RENT - 3rd floor

3001 Leuven

Monthly rent	3.089 €
Category	Offices
Area surface	337m ²
Floor	3



GREENHILL E - RENT - 2nd floor

3001 Leuven

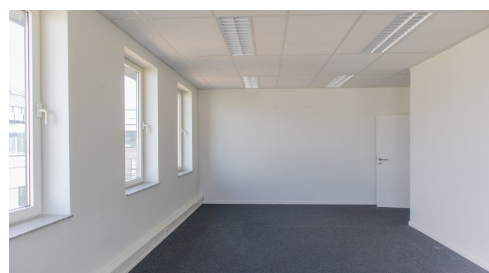
Monthly rent	4.648 €
Category	Offices
Area surface	507m ²
Floor	2



GREENHILL E - RENT - 2nd & 3rd floors

3001 Leuven

Monthly rent	7.737 €
Category	Offices
Area surface	844m ²
Floor	2+3



Description

The office building E is located in the prestigious Research Park of Haasrode (Leuven) which features green and picnic areas. This 1.807m² building based in the renowned Research Park of Haasrode (Leuven) features green and picnic areas. This is a zero fossil energy building and is equipped to install photovoltaic panels, as well as electric charging stations. It includes a ground floor and 3 floors. These offices are equipped with suspended ceilings with integrated light fixtures, cable ducts along the facades, air conditioning, a (common) kitchenette and a lift.

They are reserved to companies eligible under the "Haasrode research & business park", i.e. with main or secondary activity in R&D, innovation, IT, etc... or support for these activities.

There is a bus stop of "De Lijn" near the entrance of the Greenhill Campus Park (nos. 4 (Haasrode-Leuven-Herent) and 630 (Haasrode-Leuven Station-Wijgmaal)). The park is easily accessible by car and is only 5 minutes from the E40 Brussels-Leuven-Liège (exit 23a Haasrode Research). The park also has a restaurant with a terrace. Outdoor, indoor parking, archives and showers also available.

Contact



Steven Sagman

CCO

ss@growners.be

+32 470 10 48 41

Non contractual document

GROWNERS S.A.

Ch. de Louvain 431F

B-1380 Lasne

+32 2 357 33 10

info@growners.be

BE0860.002.790

