

## GREENHILL CAMPUS A



### Characteristics of the property

Name	GREENHILL CAMPUS A
Address	Interleuvenlaan 15 A
Town	3001 Leuven
Flood zone	not located in a flood zone
Year of construction	1999
Price range	From 268.000 € to 898.800 €
Surface area range	From 216 m <sup>2</sup> to 842 m <sup>2</sup>
Number of floors	3
Unit(s) type	Offices
Soil certificate	Yes
Asbestos inventory	Received
Elevator	Yes
Air conditioning	Yes
Indoor parking	Yes
Outdoor parking	Yes

For sale

**GREENHILL A - 3rd floor**

3001 Leuven

Price 268.000 €

Category Offices

Area surface 335m<sup>2</sup>

Floor +3



**GREENHILL A - A1.1 + A1.2**

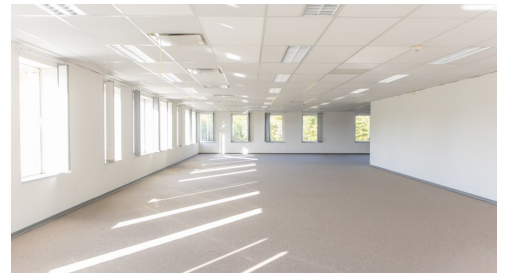
3001 Leuven

Price 315.000 €

Category Offices

Area surface 252m<sup>2</sup>

Floor +1



**GREENHILL A - 2nd floor**

3001 Leuven

Price 631.250 €

Category Offices

Area surface 505m<sup>2</sup>

Floor +2



## GREENHILL A - 2nd & 3rd floors

3001 Leuven

Price	898.800 €
Category	Offices
Area surface	842m <sup>2</sup>
Floor	2+3



## For rent

### GREENHILL A - RENT - A1.1 + A1.2

3001 Leuven

Monthly rent	2.310 €
Category	Offices
Area surface	252m <sup>2</sup>
Floor	+1



### GREENHILL A - RENT - 3rd floor

3001 Leuven

Monthly rent	3.071 €
Category	Offices
Area surface	335m <sup>2</sup>
Floor	+3



## GREENHILL A - RENT - 2nd floor

3001 Leuven

Monthly rent	4.629 €
Category	Offices
Area surface	505m <sup>2</sup>
Floor	+2



## GREENHILL A - RENT - 2nd & 3rd floors

3001 Leuven

Monthly rent	7.700 €
Category	Offices
Area surface	840m <sup>2</sup>
Floor	2+3



## For investment

## GREENHILL A - Invest 216 m<sup>2</sup> - Unit A0.2

3001 Leuven

Price	450.000 €
Category	Offices
Area surface	216m <sup>2</sup>
Floor	+0
Gross yield (%)	7.91%



## Description

The office building A is located at the entrance of the Greenhill Campus Park, with visible location from the Interleuvenlaan. This 1.956m<sup>2</sup> building based in the renowned Research Park of Haasrode (Leuven) features green and picnic areas. This is a zero fossil energy building and is equipped to install photovoltaic panels, as well as electric charging stations. It includes a ground floor and 3 floors. These offices are equipped with suspended ceilings with integrated light fixtures, cable ducts along the facades, air conditioning, a (common) kitchenette and a lift.

They are reserved to companies eligible under the "Haasrode research & business park", i.e. with main or secondary activity in R&D, innovation, IT, etc... or support for these activities.

There is a bus stop of "De Lijn" near the entrance of the Greenhill Campus Park (nos. 4 (Haasrode-Leuven-Herent) and 630 (Haasrode-Leuven Station-Wijgmaal)). The park is easily accessible by car and is only 5 minutes from the E40 Brussels-Leuven-Liège (exit 23a Haasrode Research). The park also has a restaurant with a terrace. Outdoor, indoor parking, archives and showers also available.

## Contact



**Steven Sagman**

CCO

[ss@growners.be](mailto:ss@growners.be)

+32 470 10 48 41

Non contractual document

**GROWNERS S.A.**

Ch. de Louvain 431F

B-1380 Lasne

+32 2 357 33 10

[info@growners.be](mailto:info@growners.be)

BE0860.002.790

