

## CONNEXION PARK - E



### Characteristics of the property

|                      |   |
|----------------------|---|
| Name                 | CONNEXION PARK - E                              |
| Address              | Brusselsesteenweg 500                           |
| Town                 | 1731 Zellik (Asse)                              |
| Flood zone           | not located in a flood zone                     |
| Year of construction | 2006  |
| Surface area range   | From 463 m <sup>2</sup> to 1.121 m <sup>2</sup> |
| Number of floors     | 1   |
| Unit(s) type         | Offices, Mixed spaces                           |
| Elevator             | Yes   |
| Heating type         | Gas   |
| Air conditioning     | Yes   |
| Access control       | Yes   |
| Indoor parking       | Yes   |
| Outdoor parking      | Yes   |

For rent

CONNEXION PARK E - K1.2

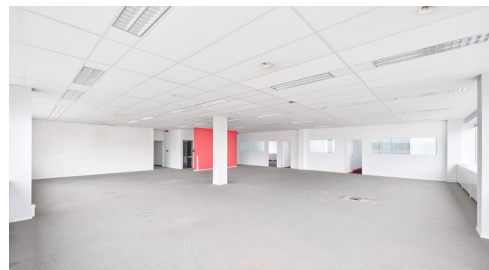
1731 Zellik (Asse)

Monthly rent 4.823 €

Category Offices

Area surface 463m<sup>2</sup>

Floor +1



CONNEXION PARK E - K1.1

1731 Zellik (Asse)

Monthly rent 6.854 €

Category Offices

Area surface 658m<sup>2</sup>

Floor +1



CONNEXION PARK E - K0.1

1731 Zellik (Asse)

Monthly rent 8.146 €

Category Offices

Area surface 782m<sup>2</sup>

Floor +0



## CONNEXION PARK E - K.0.1 + K.0.2

1731 Zellik (Asse)

|              |                        |
|--------------|------------------------|
| Monthly rent | 11.635 €               |
| Categories   | Mixed spaces - Offices |
| Area surface | 1117m <sup>2</sup>     |
| Floor        | +0                     |



## CONNEXION PARK E - K1.1 + K1.2

1731 Zellik (Asse)

|              |                    |
|--------------|--------------------|
| Monthly rent | 11.677 €           |
| Category     | Offices            |
| Area surface | 1121m <sup>2</sup> |
| Floor        | +1                 |



## Description

Several multifunctional spaces and offices are for rent in the office buildings located in the Connexion Business Park in Zellik. The offices are bright and guarantee a pleasant working atmosphere all year long. These offices and multifunctional spaces are located in the immediate vicinity of the Brussels ring (exit 10), the E40 and include plenty of parking spaces. They are accessible by public transport : 15 minute walk to Zellik station and 6 to various De Lijn bus stops.

## Contact



**Steven Sagman**

CCO

[ss@growners.be](mailto:ss@growners.be)

+32 470 10 48 41

Non contractual document

**GROWNERS S.A.**

Ch. de Louvain 431F

B-1380 Lasne

+32 2 357 33 10

[info@growners.be](mailto:info@growners.be)

BE0860.002.790

